

C. cayetanensis and these closely related species in monkeys; what additional monkey host species, especially on Bioko Island, may harbor *Cyclospora* spp.; and what other as yet unrecognized species of *Cyclospora* may be infecting primates.

**Mark L. Eberhard,
Jacob R. Owens,
Henry S. Bishop,
Marcos E. de Almeida,
Alex J. da Silva, Gail Hearn,
and Shaya Honarvar**

Author affiliations: Centers for Disease Control and Prevention, Atlanta, Georgia, USA (M.L. Eberhard, H.S. Bishop, M.E. de Almeida, A.J. da Silva); and Drexel University, Philadelphia, Pennsylvania, USA (J.R. Owens, G. Hearn, S. Honarvar)

DOI: <http://dx.doi.org/10.3201/eid2003.131368>

References

- Herwaldt BL. *Cyclospora cayetanensis*: a review, focusing on the outbreaks if cyclosporiasis in the 1990s. *Clin Infect Dis.* 2000;31:1040–57. <http://dx.doi.org/10.1086/314051>
- Herwaldt BL. The ongoing saga of U.S. outbreaks of cyclosporiasis associated with imported fresh produce: what *Cyclospora cayetanensis* has taught us and what we have yet to learn. In: Institute of Medicine, editors. *Addressing foodborne threats to health: policies, practices, and global coordination.* Washington (DC): National Academies Press. 2006. p. 85–115, 131–140.
- Centers for Disease Control and Prevention. Notes from the field: outbreaks of cyclosporiasis—United States, June–August 2013. *MMWR Morb Mortal Wkly Rep.* 2013;62:862–86.
- Eberhard ML, daSilva AJ, Lilley BG, Pieniazek NJ. Morphologic and molecular characterization of new *Cyclospora* species from Ethiopian monkeys: *C. cercopithecii* sp.n., *C. colobi* sp.n., and *C. papionis* sp.n. *Emerg Infect Dis.* 1999;5:651–8. <http://dx.doi.org/10.3201/eid0505.990505>
- Eberhard ML, Njenga MN, daSilva AJ, Owino D, Nace EK, Won KY, et al. A survey for *Cyclospora* spp. in Kenyan primates with some notes on its biology. *J Parasitol.* 2001;87:1394–7.
- Zhao GH, Cong MM, Bian QQ, Chen WY, Wang RJ, Qi M, et al. Molecular characterization of *Cyclospora*-like organisms from golden snub-nosed monkeys in Qinling

- Mountain in Shaanxi Province, northwest China. *PLoS ONE.* 2013;8:e58216. <http://dx.doi.org/10.1371/journal.pone.0058216>
- da Silva AJ, Bornay-Llinares FJ, Moura I, Slemenda SB, Tuttle JL, Pieniazek NJ. Fast and reliable extraction of protozoan parasite DNA from fecal specimens. *Mol Diagn.* 1999;4:57–64. [http://dx.doi.org/10.1016/S1084-8592\(99\)80050-2](http://dx.doi.org/10.1016/S1084-8592(99)80050-2)
- da Silva AJ, Cacciò S, Williams C, Won KY, Nace EK, Whittier C, et al. Molecular and morphologic characterization of a *Cryptosporidium* genotype identified in lemurs. *Vet Parasitol.* 2003;111:297–307. [http://dx.doi.org/10.1016/S0304-4017\(02\)00384-9](http://dx.doi.org/10.1016/S0304-4017(02)00384-9)
- Jones PJ. Biodiversity in the Gulf of Guinea: an overview. *Biodiversity and Conservation.* 1994;3:772–84. <http://dx.doi.org/10.1007/BF00129657>
- Xing J, Wang H, Han K, Ray DA, Huang CH, Chemnick LG, et al. A mobile element based phylogeny of Old World monkeys. *Mol Phylogenet Evol.* 2005;37:872–80. <http://dx.doi.org/10.1016/j.ympev.2005.04.015>

Address for correspondence: Mark L. Eberhard, Centers for Disease Control and Prevention, 1600 Clifton Rd NE, Mailstop D65, Atlanta, GA 30333, USA; email: mle1@cdc.gov

Novel Cetacean Morbillivirus in Guiana Dolphin, Brazil

To the Editor: Since 1987, morbillivirus (family *Paramyxoviridae*, genus *Morbillivirus*) outbreaks among pinnipeds and cetaceans in the Northern Hemisphere have caused high rates of death (1,2). Two morbillivirus species are known to affect aquatic animals: *Phocine distemper virus* (PDV) and *Cetacean morbillivirus* (CeMV). PDV has been isolated from pinnipeds, and 3 strains of CeMV (porpoise morbillivirus [PMV], dolphin morbillivirus [DMV], and pilot whale morbillivirus [PWMV]) have been isolated from dolphins and whales (3,4).

Serologic surveys indicate that morbilliviruses infect marine mammals worldwide (5); however, only 1 fatal case in a bottlenose dolphin (*Tursiops truncatus*) has been confirmed in the Southern Hemisphere (in the southwestern Pacific Ocean) (6). Positive DMV-specific antibody titers in 3 Fraser's dolphins (*Lagenodelphis hosei*) stranded off Brazil and Argentina in 1999 indicate the exposure of South Atlantic cetaceans to morbillivirus (7). We report a case of lethal morbillivirus infection in a Guiana dolphin (*Sotalia guianensis*), a coastal marine and estuarine species that occurs off the Atlantic Coast of South and Central America.

A female Guiana dolphin calf (108 cm in total body length) (8) was found stranded dead in Guriri (18°44'S; 39°44'W), São Mateus, Espírito Santo State, Brazil, on November 30, 2010; the dead calf was severely emaciated. Postmortem examination of the animal showed multifocal ulcers in the oral mucosa and genital slit, diffusely dark red and edematous lungs, and congested and edematous brain. Samples of selected tissues were collected, fixed in buffered formalin, and processed according to routine histopathologic methods. By microscopy, the most noteworthy lesions included marked lymphoplasmacytic and neutrophilic meningoencephalitis, optic nerve perineuritis, and hypophysitis. Lungs showed moderate acute diffuse lymphoplasmacytic and neutrophilic interstitial pneumonia; severe multicentric lymphoid depletion and multifocal necrotizing hepatitis were also observed.

Immunohistochemical analysis was performed by using CDV-NP MAb (VMRD, Inc., Pullman, WA, USA), a monoclonal antibody against the nucleoprotein antigen of canine distemper virus that cross-reacts with cetacean morbilliviruses (9). Known positive and negative control tissues and test sections with omitted first-layer antibody were included. Viral antigen was detected in neurons in the brain,

bronchiolar epithelium and macrophages in the lungs, bile duct epithelium in the liver, and macrophages and lymphocytes in lymph nodes.

We extracted RNA from frozen lung samples by using TRIzol Reagent (Life Technologies Corporation, Carlsbad, CA, USA) according to the manufacturer's instructions and amplified a 374-bp conserved fragment of the phosphoprotein (P) gene by reverse transcription PCR. The following *Morbillivirus* spp.-specific primers were used for PCR: 5'-ATGTTTATGATCACAGCGGT-3' (forward) and 5'-ATTGGGTTGCACCACTTGTC-3' (reverse) (3). MEGA5 (<http://mega.software.net/>) was used to construct a neighbor-joining phylogenetic tree based on the sequenced amplicon from this study (GenBank accession no. KF711855) and 12 other GenBank sequences that represent the 6 morbillivirus species already described in the literature. The analysis placed the Guiana dolphin strain at the CeMV clade, but segregated it from the already described dolphin morbillivirus

strains PMV, DMV, and PWMV (Figure). The sample shared 79.8% nt and 58.4% aa identity with PMV, 78.7% nt and 56.6% aa identity with DMV, and 78.7% nt and 57.1% aa identity with PWMV. Within the *Morbillivirus* spp., PDV shared the lowest sequence identity (51.1% nt and 26.8% aa).

In summary, sequence analysis of the morbillivirus from the dead Guiana dolphin suggests that the virus is a novel strain of the CeMV species; this conclusion is supported by phylogenetic analysis and geographic distribution of the virus and by its distinct host. Emaciation, marked lymphoid depletion, interstitial pneumonia, and meningoencephalitis are common findings in morbillivirus-infected animals (1,2). Together with antigenic and genomic evidence, our findings indicate that morbillivirus infection is extant in Guiana dolphins in the waters off Brazil.

Morbillivirus outbreaks have caused a high number of deaths among pinnipeds and cetaceans and

are a major risk to previously unexposed nonimmune populations of aquatic mammals (1,2). A high number of morbillivirus-related deaths have not yet been reported among aquatic mammals in the waters off Brazil, but our findings shows that Guiana dolphin calves are susceptible to infection. Subclinical morbillivirus infection with immune suppression has been reported in bottlenose dolphins in Florida (10). It is unknown whether subclinical infection occurs in this host population or whether the virus has undergone species-adaptive changes, as proposed for PWMV (4). The sequence data from our study suggest that the virus from the Guiana dolphin calf is the fourth member of the CeMV group and is closer to the root of the CeMV clade than to that of DMV, PMV, or PWMV. Further studies are required to determine the epidemiology of morbillivirus infection in this and other cetacean species and to assess the risk for epizootic outbreaks among South Atlantic cetaceans.

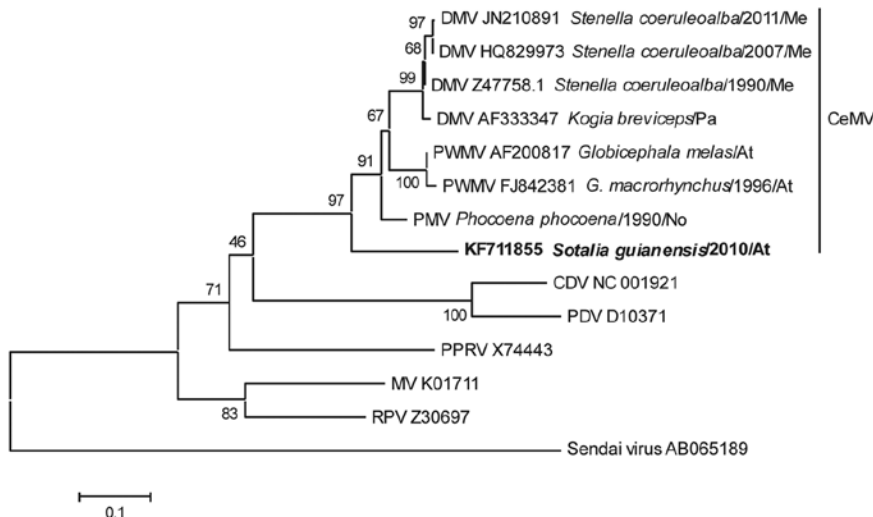


Figure. Phylogenetic tree of a 374-bp conserved region from the phosphoprotein gene of a cetacean morbillivirus isolated from a Guiana dolphin (in boldface; GenBank accession no. KF711855) and 12 other previously described morbilliviruses. Sendai virus was added as an outgroup member. Sequences were aligned and a neighbor-joining tree with 1,000 bootstrap replications was generated by using MEGA5 (<http://megasoftware.net/>). For comparison, recognized viruses of the *Morbillivirus* spp. (*Measles virus* [MV], *Rinderpest virus* [RPV], *Peste-des-petits ruminants virus* [PPRV], *Canine distemper virus* [CDV], and *Phocine distemper virus* [PDV]) were included, as were the 3 *Cetacean morbillivirus* (CeMV) strains: porpoise morbillivirus (PMV), dolphin morbillivirus (DMV), and pilot whale morbillivirus (PWMV). Sequence names are followed by species of cetacean, year of stranding (when available), and the abbreviation for the geographic area. Me, Mediterranean Coast; Pa, Pacific Ocean; At, Atlantic Ocean; No, North Sea. The sequence for PMV strain *Phocoena phocoena*, is from Barrett et al. (3). The scale bar indicates nucleotide substitutions per site.

Acknowledgments

We thank Ariosvaldo Pinto dos Santos and volunteers for the valuable help during the fieldwork; Projeto TAMAR and Parque Estadual de Itaúnas for reporting stranded marine mammals and providing logistical support in many stranding events; Jane Megid, Adriana Cortez, Susan D. Allendorf, Cíntia Maria Favero, and laboratory staffs from participating institutions for assistance during analysis; and the journal editor and 2 anonymous reviewers for their constructive comments.

Fundação de Amparo à Pesquisa do Estado de São Paulo provided grants (processes 2010/50094-3, 2011/08357-0 and 2012/00021-5), which are greatly appreciated. Veracel Celulose provided financial support to the Rescue Program. Projeto Baleia Jubarte is sponsored by Petróleo Brasileiro (Petrobras). J.L.C.-D. is a recipient of a professorship by the Conselho Nacional de Desenvolvimento Científico e Tecnológico–CNPq (301517/2006-1).

This study was conducted by K.R.G. as partial fulfillment of the requirements for a doctoral degree at the Departamento de Patologia, Faculdade de Medicina Veterinária e Zootecnia, Universidade de São Paulo.

**Kátia R. Groch,
Adriana C. Colosio,
Milton C. C. Marcondes,
Daniele Zucca,
Josué Díaz-Delgado,
Claudia Niemeyer,
Juliana Marigo,
Paulo E. Brandão,
Antonio Fernández,
and José Luiz Catão-Dias**

Author affiliations: University of São Paulo, São Paulo, Brazil (K.R. Groch, C. Niemeyer, J. Marigo, P.E. Brandão, J.L. Catão-Dias); Instituto Baleia Jubarte, Caravelas, Brazil (K.R. Groch, A.C. Colosio, M.C.C. Marcondes); and University of Las Palmas de Gran Canaria, Las Palmas de Gran Canaria, Canary Islands, Spain (D. Zucca, J. Díaz-Delgado, A. Fernández)

DOI: <http://dx.doi.org/10.3201/eid2003.131557>

References

1. Di Guardo G, Marruchella G, Agrimi U, Kennedy S. Morbillivirus infections in aquatic mammals: a brief overview. *J Vet Med A Physiol Pathol Clin Med.* 2005;52:88–93. <http://dx.doi.org/10.1111/j.1439-0442.2005.00693.x>
2. Kennedy S. Morbillivirus infections in aquatic mammals. *J Comp Pathol.* 1998;119:201–25. [http://dx.doi.org/10.1016/S0021-9975\(98\)80045-5](http://dx.doi.org/10.1016/S0021-9975(98)80045-5)
3. Barrett T, Visser IK, Mamaev L, Goatley L, Van Bresse MF, Osterhaus AD. Dolphin and porpoise morbilliviruses are genetically distinct from phocine distemper virus. *Virology.* 1993;193:1010–2. <http://dx.doi.org/10.1006/viro.1993.1217>
4. Taubenberger JK, Tsai MM, Atkin TJ, Fanning TG, Krafft AE, Moeller RB, et al. Molecular genetic evidence of a novel morbillivirus in a long-finned pilot whale (*Globicephalus melas*). *Emerg Infect Dis.* 2000;6:42–5. <http://dx.doi.org/10.3201/eid0601.000107>
5. Van Bresse M-F, Raga JA, Guardo GD, Jepson PD, Duignan PJ, Siebert U, et al. Emerging infectious diseases in cetaceans worldwide and the possible role of environmental stressors. *Dis Aquat Organ.* 2009;86:143–57. <http://dx.doi.org/10.3354/dao02101>
6. Stone BM, Blyde DJ, Saliki JT, Blas-Machado U, Bingham J, Hyatt A, et al. Fatal cetacean morbillivirus infection in an Australian offshore bottlenose dolphin (*Tursiops truncatus*). *Aust Vet J.* 2011;89:452–7. <http://dx.doi.org/10.1111/j.1751-0813.2011.00849.x>
7. Van Bresse MF, Van Waerebeek K, Jepson PD, Raga JA, Duignan PJ, Nielsen O, et al. An insight into the epidemiology of dolphin morbillivirus worldwide. *Vet Microbiol.* 2001;81:287–304. [http://dx.doi.org/10.1016/S0378-1135\(01\)00368-6](http://dx.doi.org/10.1016/S0378-1135(01)00368-6)
8. Di Benedetto APM, Ramos RMA. Biology of the marine tucuxi dolphin (*Sotalia fluviatilis*) in south-eastern Brazil. *Journal of the Marine Biological Association of the United Kingdom.* 2004;84:1245–50. <http://dx.doi.org/10.1017/S0025315404010744h>
9. Saliki JT, Cooper EJ, Gustavson JP. Emerging morbillivirus infections of marine mammals: development of two diagnostic approaches. *Ann N Y Acad Sci.* 2002;969:51–9. <http://dx.doi.org/10.1111/j.1749-6632.2002.tb04350.x>
10. Bossart GD, Romano TA, Peden-Adams MM, Schaefer A, McCulloch S, Goldstein JD, et al. Clinicopathologic findings in Atlantic bottlenose dolphins *Tursiops truncatus* with positive cetacean morbillivirus antibody titers. *Dis Aquat Organ.* 2011;97:103–12. <http://dx.doi.org/10.3354/dao02410>

Address for correspondence: Kátia R. Groch, Laboratório de Patologia Comparada de Animais Selvagens, FMVZ, Universidade de São Paulo, Av. Orlando Marques de Paiva 87, São Paulo, SP, 05508-270, Brazil; email: kgroch@terra.com.br



Outbreak of a New Strain of Flu at a Fair

Dr. Karen Wong, an EIS officer with the Centers for Disease Control and Prevention, discusses her study about flu outbreaks at agricultural fairs.



<http://www2c.cdc.gov/podcasts/player.asp?f=8627464>